

**RCL Polyclonal Antibody**  
**Catalog # AP72215****Specification**

---

**RCL Polyclonal Antibody - Product Information**

|                   |                        |
|-------------------|------------------------|
| Application       | WB                     |
| Primary Accession | <a href="#">O43598</a> |
| Reactivity        | Human                  |
| Host              | Rabbit                 |
| Clonality         | Polyclonal             |

**RCL Polyclonal Antibody - Additional Information****Gene ID** 10591**Other Names**

RCL; C6orf108; Deoxyribonucleoside 5'-monophosphate N-glycosidase; c-Myc-responsive protein Rcl

**Dilution**

WB~~Western Blot: 1/500 - 1/2000. ELISA: 1/40000. Not yet tested in other applications.

**Format**

Liquid in PBS containing 50% glycerol, 0.5% BSA and 0.09% (W/V) sodium azide.

**Storage Conditions**

-20°C

**RCL Polyclonal Antibody - Protein Information****Name** DNPH1 ([HGNC:21218](#))**Function**

Part of a nucleotide salvage pathway that eliminates epigenetically modified 5-hydroxymethyl-dCMP (hmdCMP) in a two-step process entailing deamination to cytotoxic 5-hydroxymethyl-dUMP (hmdUMP), followed by its hydrolysis into 5-hydroxymethyluracil (hmU) and 2-deoxy-D-ribose 5-phosphate (deoxyribosephosphate) (PubMed:<a href="http://www.uniprot.org/citations/33833118" target="\_blank">33833118</a>). Catalyzes the second step in that pathway, the hydrolysis of the N-glycosidic bond in hmdUMP, degrading this cytotoxic nucleotide to avoid its genomic integration (PubMed:<a href="http://www.uniprot.org/citations/33833118" target="\_blank">33833118</a>).

**Cellular Location**

Cytoplasm. Nucleus

**Tissue Location**

Expressed at low levels in brain, colon, lung, peripheral blood leukocytes, placenta, small intestine, and thymus Expressed at high levels in heart, kidney, liver, skeletal muscle and spleen.

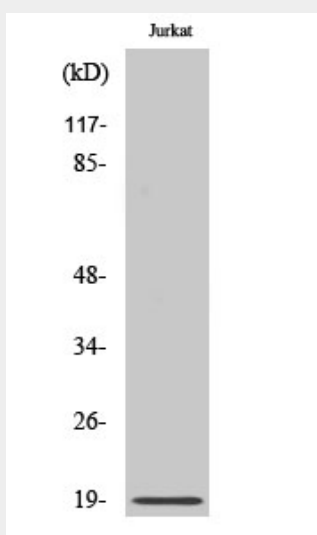
Overexpressed in a significant proportion of breast cancers

### **RCL Polyclonal Antibody - Protocols**

Provided below are standard protocols that you may find useful for product applications.

- [Western Blot](#)
- [Blocking Peptides](#)
- [Dot Blot](#)
- [Immunohistochemistry](#)
- [Immunofluorescence](#)
- [Immunoprecipitation](#)
- [Flow Cytometry](#)
- [Cell Culture](#)

### **RCL Polyclonal Antibody - Images**



Western Blot analysis of various cells using RCL Polyclonal Antibody

### **RCL Polyclonal Antibody - Background**

Catalyzes the cleavage of the N-glycosidic bond of deoxyribonucleoside 5'-monophosphates to yield deoxyribose 5- phosphate and a purine or pyrimidine base. Deoxyribonucleoside 5'-monophosphates containing purine bases are preferred to those containing pyrimidine bases.